

2024 / Warsaw / Poland

# HALL OF BUDDHAS

Interior design: Katarzyna Richter, Justyna Smolec

Visual identification: Sonia Prajs





# **Exhibition of interior design of Hall of Buddhas**

**Warsaw, Poland, 2024**

**from 5th May to 19th May 2025**

**Main hall of Escuela de Arte y Superior de Diseño  
de Jerez, C/ Porvera 54  
11403 Jerez de la Frontera,  
Cádiz, Spain**

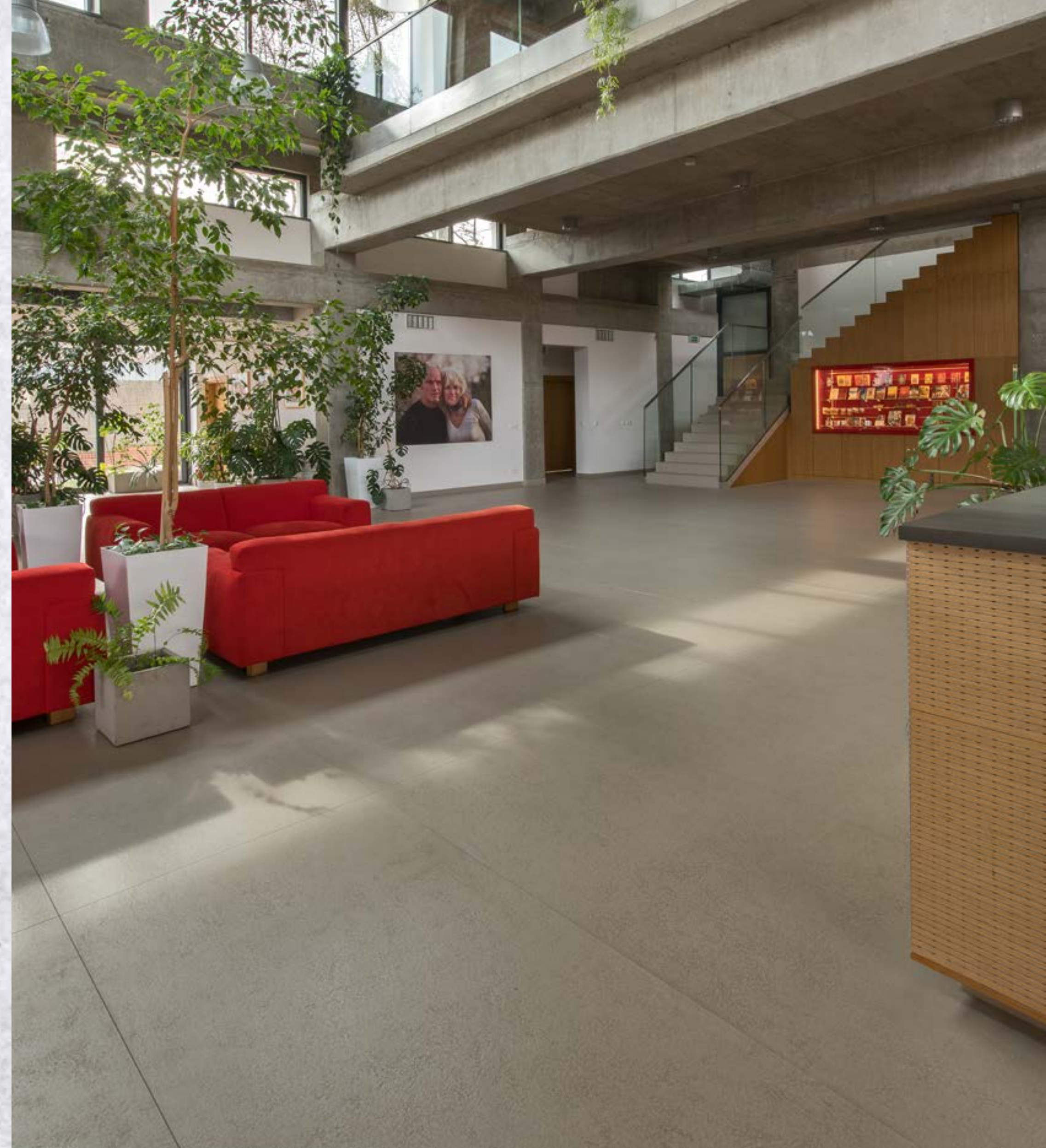


# The project involved the extension

and adaptation of a building located in Warsaw, on Ożarowska Street, in the 'Koło' housing estate, built in 1947-56 according to the designs of architects Helena and Szymon Syrkus. The buildings on the investment site - a single-storey hall and an adjacent basement connector - are covered by conservation protection on the basis of their entry in the register of monuments. In accordance with the investor's guidelines and the prepared design, the warehouse building was adapted into a meditation centre with living quarters for both its permanent users and visitors. In order to adapt the building to the planned function, the design included the superstructure of the existing hall building by one storey.

---

>  
Common space





# The elements constituting

the new fabric are characterised by a modern form, a simple, technical architectural expression and contemporary material solutions. This made it possible to clearly emphasise the division between the existing renovated elements and the newly designed or reconstructed parts of the building. On the ground floor of the hall, directly adjacent to the entrance area, a spacious hall was designed with glazing located in the superstructure belt. On either side of the hall, in the lower aisles, are the social areas and ancillary rooms. The most important room in the building – the gompa – is designed as a high, single-space room, lit by strip windows and skylights. The other two usable floors of the building house residential, technical and auxiliary rooms.

---

>  
View from the mezzanine





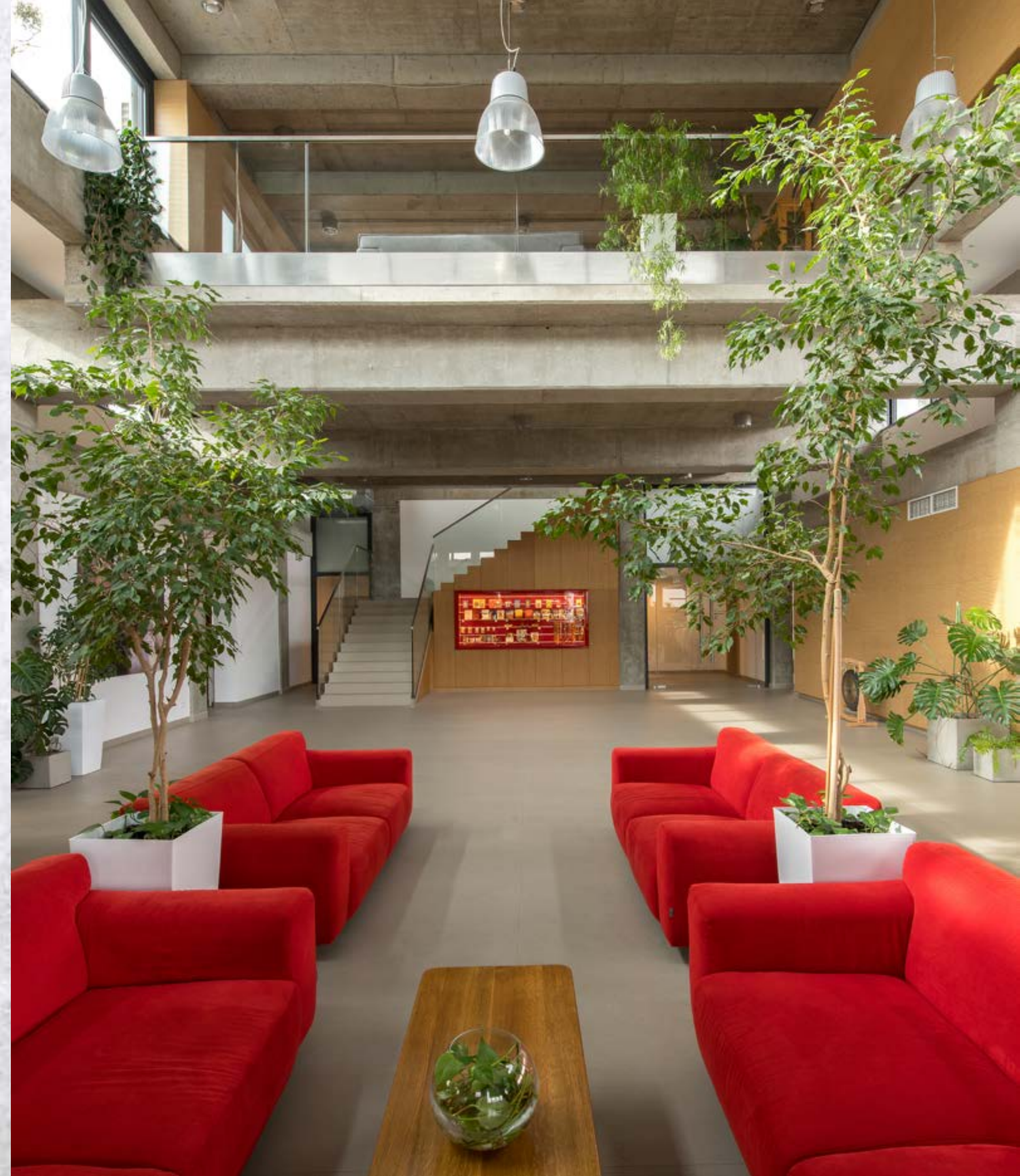
## The project also included the construction of a usable terrace

over the single-storey connector and part of the hall building. The changes also included landscaping around the entrance area of the building and a strip of land on the south side of the building.

The designed interiors of the Buddhist centre, with an area of 1154.12 m<sup>2</sup>, are located in an adapted and extended, according to the design of the Grupa 5 architectural office, modernist building in the historic "Kolo" estate, erected in 1947-56 according to the designs of architects Helena and Szymon Syrkus in Warsaw. The buildings on the site - a single-storey hall and an adjacent basement connector - are covered by conservation protection on the basis of their entry in the register of monuments.

---

>  
Common space





# The building, which had a warehouse

function, was adapted into a meditation centre with living quarters for both its permanent users and visitors, according to the developer's guidelines and the architectural design developed. In order to adapt the building to the planned function, the project envisaged the superstructure of the existing hall building by one storey.

---

>  
Ceiling detail





# The most important room in the building – the gompa

– is designed as a high, single-space room, lit by strip windows and skylights.

In order to improve the acoustics of the interior of the gompa (meditation hall), perforated Rigiton RL 8/18 gypsum boards with white fleece, painted ivory in colour, are used. Behind them is mineral wool as a damping material.

Economical design, warm colours, natural materials (oak, concrete, glass, steel) are conducive to meditation. The idea behind the design was to limit distracting elements. In order to improve the acoustics of the interior of the gompa (meditation hall), perforated Rigiton RL 8/18 gypsum boards with white fleece, painted ivory in colour, are used. Behind them is mineral wool as a damping material.





# The interior designers modified architectural design, developing designs in scales

of 1:50 and 1:20 for the public, disabled and resident bathrooms, an updated functional layout and selection of furnishings for the residents' rooms, an extension of the kitchen function with its opening into the dining area, and a design of the kitchen technology, a functional layout of the hall, cloakroom and meditation hall, (gompa) a design of the pre-gompa cloakroom, a design of the cinema on the mezzanine floor, designs of the corridors and the connector, stairs. A new selection of all interior finishing materials, lamps, design of acoustics, sound system, lighting and selection of furniture has been made.

---

> View from the mezzanine





Meditation and other Buddhist activities for the local community take place here. Residents live here, but it is a communal and intergenerational space.

## A central staircase to the living

area and a mezzanine floor promote the integration of guests with residents and the building of interpersonal bonds.

---

>  
Stairs





# The open-plan kitchen with dining

area invites guests to spend time together. The vegetation in the main hall space soothes the emotions.

The open kitchen located almost directly in front of the entrance invites people to spend time together. More than 20 people often gather around the island. This is where residents and guests cook together. A well-equipped kitchen with a high-powered industrial hood, stainless steel cabinets and quartz sintered worktops is the basis for live-cooking.

The idea behind the interior design was to limit distracting elements, which helps people to focus and turn inwards.



Kitchen





The main premise of the project is solutions conducive to building interpersonal bonds. The space provides the opportunity to live in a lay community and share the same Buddhist ideology.

**The place is visited by anyone** interested in philosophy regardless of age, gender or nationality. Meditation sessions, lectures explaining the Buddha's teachings, workshops, ethics classes for schools, exhibitions of Buddhist art and culture, festivals and open days for the local community are held here. Thematic books, meditation accessories and films can be purchased here. It is the main centre of the social life of the community, which usually lives in the immediate vicinity.

---

>  
Dining room





# The high communal

**space** allows for the cultivation of large-scale vegetation. Nature has a positive and soothing effect on people's emotions and is therefore an important element of the composition of this interior. At the same time, it enlivens the coolness of the grey concrete, harmonising the visual feeling.

---

>  
Space





# The Buddhist centre

is prepared to accommodate more than 200 people in communal spaces. This fosters the spread of Buddhist philosophy, which brings positive energy to the life of the city. Supports development. It supports the revitalisation of Warsaw's Wola district, which has been neglected until recently.

---

Mezzanine – educational space





## On the ground floor, the **original fabric**

of the building has been preserved. The first floor was built under the supervision of the conservation officer.

The total area of the designed part of the centre is 1154.15 m<sup>2</sup> to be built in 2015 –2024.

The central location of the stairs leading to the residential part and the open mezzanine foster the integration of guests with the residents.

The building is equipped with state-of-the-art technology, a wireless sound system, recuperation, energy-efficient lighting and is accessible to the disabled.

Gustafs RP8-C10 acoustic panels in oak veneer balance the sound reflection from the concrete ceilings and structural elements.



Communication





# The honesty of the raw materials

here goes hand in hand with the Buddhist philosophy of minimalism and a holistic approach. The calm, orderly space and well-structured environment allows energy to flow freely.

---

>  
Public bathrooms





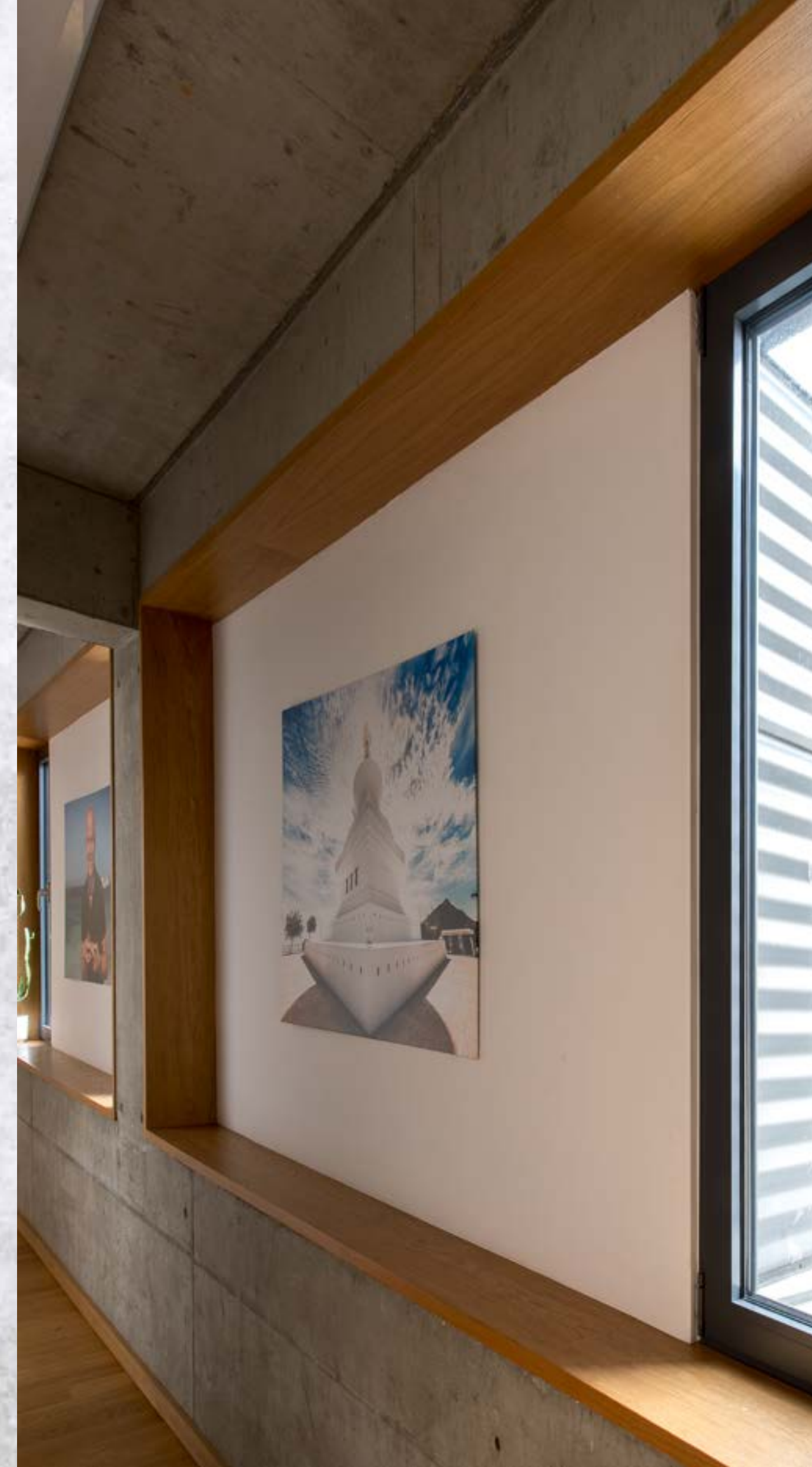
# The design follows the te- nets of harmony

between the life zone and the spiritual path. We created a place resonating with clarity and purpose keeping in mind the impact of the physical surroundings on wellbeing. The building is equipped with modern technology and is accessible to people with disabilities.

Raw, natural materials go hand in hand with the Buddhist philosophy of minimalism. The centre supports the revitalisation of the Wola district. The interior design expresses respect for the architecture of modernism. It is located in an extended and adapted building with a former warehouse function. It is located in the historic "Koło" housing estate in Warsaw, built in 1947-56 to a design by architects Helena and Szymon Syrkus.



Corridor





# The visual identification system

was designed to be highly visible and give the space an individual character. Hand-painted markings on concrete using stencils create an interesting complement to the interior architecture. An identical and minimalistic marking scheme was used everywhere, which organizes the space. Overload was avoided in favor of simplicity and lightness.

---

Visual identification >

Wyjście  
Exit

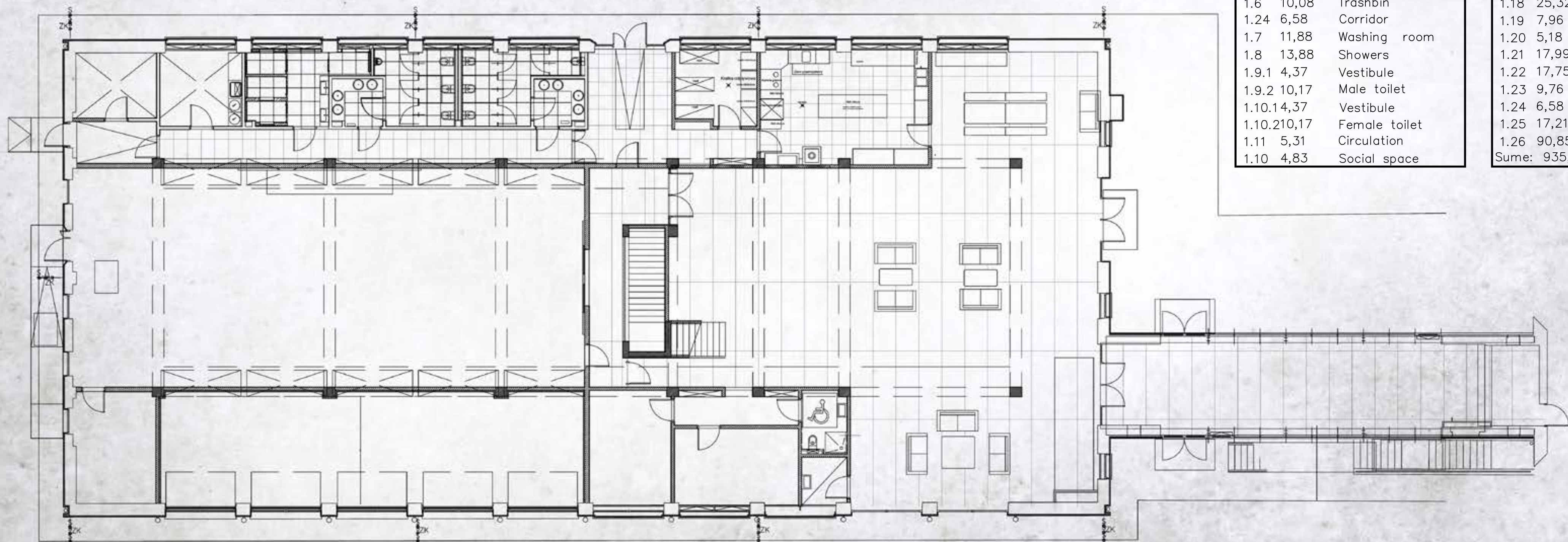
WC



Prysznice  
Shower



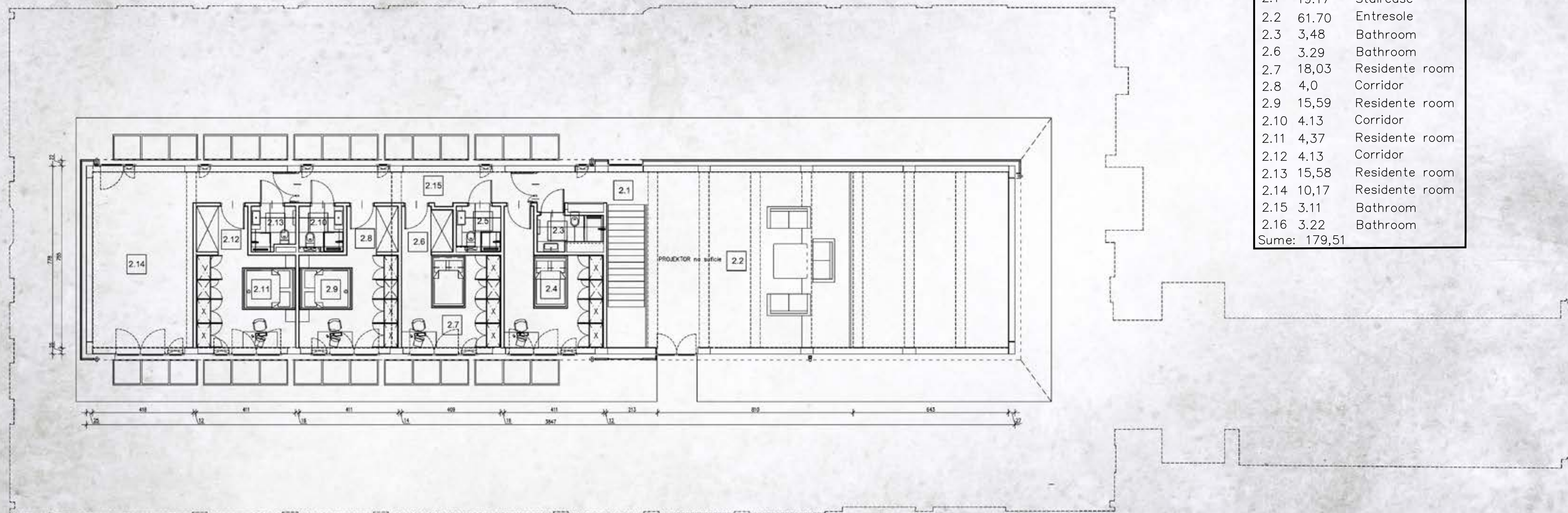




Area. [m2]	Name of a room
1.1 70,06	Connector
1.1.1 15,32	Entrence vestibule
1.2 193,57	Hall—integration
1.3 22,03	Circulation
1.4 213,83	Meditation gompal
1.5 21,31	Gompa vestibule
1.6 10,08	Trashbin
1.24 6,58	Corridor
1.7 11,88	Washing room
1.8 13,88	Showers
1.9.1 4,37	Vestibule
1.9.2 10,17	Male toilet
1.10.14,37	Vestibule
1.10.210,17	Female toilet
1.11 5,31	Circulation
1.10 4,83	Social space

1.11 26,05	Circulation
1.12 36,50	Open kitchen
1.13 11,26	Kitchen base
1.14 2,84	Circulation
1.15 36,97	Dinning room
1.16 4,06	Maintenance room
1.17 11,95	Wardrobe
1.18 25,32	Chillout space
1.19 7,96	Circulation
1.20 5,18	Disabled toilet
1.21 17,99	Residente room
1.22 17,75	Residente room
1.23 9,76	Wardrobe
1.24 6,58	Corridor
1.25 17,21	Gompa base
1.26 90,85	Garrages
Sume: 935,51	







**Interior design authors: Katarzyna Richter, Justyna Smolec**  
**Visual identification: studioprajs.com**  
**Grupa 5 Architekci**

**Organization:**  
**The Institute of Art at the Faculty of Architecture,**  
**Białystok University of Technology (BUT)**  
**Department of Institutional and International Relations,**  
**Escuela de Arte y Superior de Diseño de Jerez**  
**Catalogue concept and typesetting: studioprajs.com**  
**Photographs: Jacek Kucharczyk**  
**Translation and proofreading: Katarzyna Richter**

**Publisher: Białystok University of Technology (BUT)**  
**ISBN 978-83-68077-79-7**  
**Białystok 2025**

**The research was carried out as part of the thesis No. WZ/WA-IS/3/2023 at Białystok University of Technology and financed from a research subsidy provided by the minister in charge of science.**