

## Support for people with disabilities

According to the adopted Ordinance on Supporting People with Disabilities, support is provided upon request of the individual concerned.

The Office for People with Disabilities (BON) offers support to university applicants, students, doctoral candidates, postgraduate students, and researchers who hold a disability certificate or submit relevant medical documentation.

More information about support for people with disabilities in English is available at: <https://pb.edu.pl/en/university/office-for-people-with-disabilities/>

Individuals can receive assistance from the Office for People with Disabilities, as well as from Disability Support Officers operating within faculties and university units, including the Library, the Foreign Language Centre, and the Physical Education and Sports Centre. This support includes help with contacting instructors and assistance in organizational matters.

Where necessary, the processes of recruitment, education, or research may be adapted to meet specific needs resulting from a disability. Such adjustments can be arranged by submitting an appropriate application through the Office for People with Disabilities.

Applicants may request adjustments to entrance examinations (see: Applicants with disabilities).

Students and doctoral candidates may benefit from various forms of support, including assistance from a teaching assistant, modification of the form of examinations, extension of examination time, and individualized course registration to accommodate personal needs (see: Students and Doctoral Candidates with disabilities).

Other employees with special needs, including disabilities, can apply for assistance on the basis of [Zarządzenia nr 77/2023 Rektora Politechniki Białostockiej z dnia 26 lipca 2023 roku w sprawie ustalenia Procedury antydyskryminacyjnej i rozpatrzenia wniosków osób ze szczególnymi potrzebami w Politechnice Białostockiej.](#)

Students and employees can borrow specialized equipment and software.

Members of the academic community can get anonymous, free assistance from a Psychologist and a Psychological Consultant of the educational process - information on support:

<https://pb.edu.pl/en/university/psychological-assistance/>

The university provides access to the Polish Sign Language interpreter service online, 7 days a week from 8 a.m. to 8 p.m. - information:

<https://pb.edu.pl/dostepnosc-cyfrowa/informacje-na-temat-korzystania-z-uslugitlumaczenia-polskiego-jezyka-migowego-online/>

People with disabilities can use adapted workstations in the Main Library and the libraries of the Faculties of Architecture and Management Engineering:

<https://biblioteka.pb.edu.pl/en/about-us/about-library/>



Students with disabilities can receive financial support from the university - in the 2024/2025 academic year, the scholarship for students with disabilities: PLN 1,200 with a light degree, PLN 1,500 with a moderate degree, PLN 2,000 with a severe degree. Doctoral students with a disability certificate who began their education at the Doctoral School may receive an increase in the disability stipend.

Students and Ph.D. students with a disability certificate may receive financial support from PFRON to help them obtain higher education

<https://www.pfron.org.pl/aktualnosci/szczegoly-aktualnosci/news/program-aktywnysamorzad-w-2025-roku/>

The university is increasing the architectural accessibility of its facilities and their surroundings:

Order No. 31/2024 of the Rector of the Bialystok University of Technology dated April 4, 2024 on establishing "Architectural Accessibility Standards of the Bialystok

University of Technology":<https://bip.pb.edu.pl/?event=informacja&id=21245>,  
informacja o dostępności obiektów znajduje się również na stronie:  
<https://pb.edu.pl/en/accessibilitydeclaration/declaration-of-architectural-accessibility-of-buildings-of-bialystok-university-oftechnology/>

In 2024, the university has made some significant changes to improve accessibility for people with disabilities. The newly opened court and field complex at the university has been specially adapted to also cater to people with special needs, ensuring that they can actively participate. In addition, the Beta Student House underwent upgrades that included the installation of a public restroom and a living segment adapted to the needs of people with disabilities. At the Faculty of Electrical Engineering, the Auditorium was modernized, with the installation of a lift to facilitate access to the elevation and the introduction of systems to support people with hearing impairments. The building at 10 Zwierzyniecka Street was adapted by adapting the entrances, toilets and elevator to the needs of people with disabilities, and a ramp was built near the facility.

Another important element was the adaptation of the parking lot and walkways at the Wiejska 45A building to better meet the needs of people with disabilities. In addition, 14 stationary inductophone loops were installed at service points, which supports people with hearing impairments, among other things, in the reception areas.

These initiatives are a step toward a more accessible and inclusive university space that is conducive to all our students and employees.

Information about supporting people with disabilities:

<https://pb.edu.pl/en/university/office-for-people-with-disabilities/> (requests for support for specific groups of people translated into English are available).

Regulations for supporting people with disabilities:

<https://bip.pb.edu.pl/index.php?event=informacja&id=18700>

Information about support from Mentors: <https://pb.edu.pl/bon/opiekunowie-ozn/>

Information on support targeted at candidates: <https://pb.edu.pl/bon/kandydaci/>

Information about support for Students: <https://pb.edu.pl/bon/studenci/> and  
Doctoral Candidates: <https://pb.edu.pl/bon/doktoranci/>

Information about support for researchers: <https://pb.edu.pl/bon/naukowcy/>

Information about the rental service: <https://pb.edu.pl/bon/wypożyczalnia/>

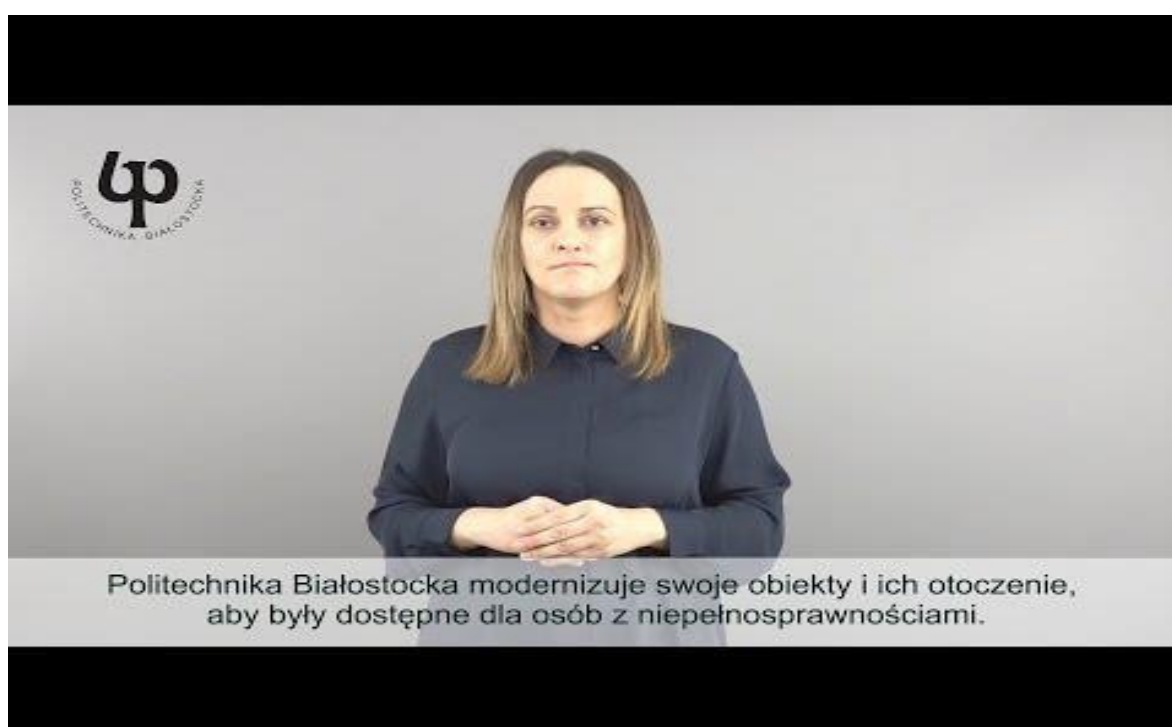
Information about psychological assistance: <https://pb.edu.pl/pomoc-psychologiczna/> Information about the online Polish Sign Language translator service:

<https://pb.edu.pl/dostepnosc-cyfrowa/informacje-na-temat-korzystania-z-uslugitlumaczenia-polskiego-jezyka-migowego-online/>



Information about the locations where induction loop systems have been installed:  
<https://pb.edu.pl/bon/dostepnosc/>

Information about Białystok University of Technology in Polish sign language:  
<https://youtu.be/WqJdnebfw0?si=n9ifWAQy7bDYFBbi>



In 2025 the university continued to develop its support framework by expanding psychological assistance (including psychiatric consultations), promoting external funding programmes, and improving the accessibility of administrative processes, e.g:

- The INTONAVI navigation – an app designed to facilitate movement and spatial orientation for users, including persons with disabilities. Thanks to its multilingual support, it also assists international users.
- psychological support - available to students as part of the university's commitment to well-being and equal access to education. Students can benefit from consultations with qualified specialists, including psychologists and, in some cases, psychiatrists.
- free legal advice provided as part of the "PB Dostępna 2.0" project

## **Bialystok University of Technology offers on-campus accommodation**

We have a reasonable accommodation policy for people with disabilities, including adequate funding. Bialystok University of Technology offers accommodation on campus. The university provides accommodation in 4 Student Houses and in the EPSILON Student House. For the needs of people with disabilities, a total of 4 segments in the Student Houses have been modernized. Each segment consists of an adapted bathroom and two rooms - a single and a double room.

The segments adapted for people with disabilities are located in three Student Houses:

- Student House ALPHA, ul. Zwierzyniecka 14, Białystok, rooms 103-104.
- Student House GAMMA, ul. Zwierzyniecka 8, rooms 117-118.
- Student House BETA, ul. Zwierzyniecka 12, rooms 107-108.

Accommodation in Bialystok University of Technology's Student Houses is regulated by Rector's Order No. 97/2021 of August 27, 2021, regarding the implementation of the "Regulations of Bialystok University of Technology's Student House" and the determination of accommodation fees in the Student Houses.

<https://www.bip.pb.edu.pl/index.php?event=informacja&id=20764>

By the decision of the Head of the Academic Student House, applications for accommodation in Student Houses from disabled students are considered first.

Any person with a documented disability may apply for a scholarship for disabled students (PLN 1200 - light degree, PLN 1500 - moderate degree, PLN 2000 - severe degree).



Double room adapted for people with disabilities in Beta Student House



A single room adapted for people with disabilities at the Student Dormitory Gamma



A bathroom adapted for people with disabilities at the Student Dormitory